

Explore Grove Park-Sunset Mountain on the TOUR OF HOMES 2025

By Steve Harsnett, President - Grove Park-Sunset Mountain Neighborhood Association

SEPTEMBER 13-14, Homes Open & Bus Running 1-5PM

Join us and experience the timeless charm of one of Asheville's most celebrated neighborhoods. The Grove Park – Sunset Mountain neighborhood was originally envisioned and developed in the early 20th century by Saint Louis entrepreneur Edwin Wiley Grove, in collaboration with Chancey Beadle, the talented landscaper and superintendent of the Biltmore Estate. Their vision created a unique residential community that blended natural beauty with thoughtful design — a vision that continues to shine today.

In 1907, Grove purchased the land surrounding the soon-to-be Grove Park Inn and began shaping a community of graceful, architecturally distinct homes. Completed



Influenced by Richard Sharp Smith, supervising architect of the Biltmore Estate, the neighborhood's signature "English Derived Craftsman" style pays homage to the Arts and Crafts movement. Alongside this are examples of Tudor Revival, Queen Anne, and mid-century modern homes, each contributing to the neighborhood's remarkable character.



Architectural Details to Look For On The Tour



Hand-Crafted From Nature

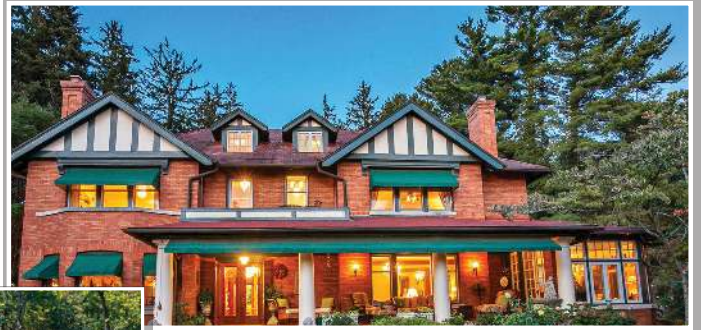
Many homes feature locally quarried stone foundations, hand-hewn beams, and custom millwork — reflecting the Arts & Crafts belief that a home should be both beautiful and



in 1913, the Grove Park Inn remains a cornerstone of the neighborhood, a symbol of the area's enduring elegance.

What began as a "streetcar suburb" quickly became known for its beautiful homes, larger lots, and forward-thinking features — from curvilinear streets like Macon Avenue to carefully planned landscaping and walkable sidewalks.





functional, with materials expressing their natural character.



Distinctive Windows and Doors

You'll notice:

- Diamond-pane or leaded glass windows
- Arched entryways and original wooden front doors with iron strap hinges
- Transom windows and multi-light sash windows that let in soft, dappled mountain light



Architectural Variety with Cohesion

While the neighborhood is known for the "English-Derived Craftsman" style, many homes also borrow from:

- Tudor Revival – steep-pitched gables, half-timbering
- Queen Anne – asymmetry, turrets, and bay windows
- Mid-Century Modern (in later homes) – low lines, wide eaves, and integration with nature

Yet these diverse styles feel cohesive due to common materials, proportions, and the rolling topography of the lots.



GROVE PARK -
SUNSET MOUNTAIN

NEIGHBORHOOD ASSOCIATION

SEPTEMBER

13 & 14

1 - 5 PM

GROVE PARK NEIGHBORHOOD TOUR OF HOMES

WWW.GROVEPARKTOUR.ORG



Signature Fireplaces

Fireplaces were not just for warmth — they were the emotional center of the home. Look for:

- Oversized stone hearths
- Custom tile work from regional potteries
- Built-in benches flanking the fireplace, a hallmark of the Craftsman style

Integration with Nature

Many homes are sited to take advantage of mountain views, with large porches, stone terraces, and deep eaves that blend the home into the landscape. It's no accident — this reflects Grove and Beadle's belief in harmony between architecture and environment.

The Grove Park – Sunset Mountain Neighborhood remains a place where history lives on. Residents are passionate about preserving its story, restoring homes with care, and maintaining the spirit of the original community while embracing modern living. As part of these efforts, the nonprofit and all-volunteer Grove Park – Sunset Mountain Neighborhood Association oversees the care of beloved community spaces, including Sunset Park, E.W. Grove Park, the Griffing Rose Garden, and twenty-two landscaped traffic islands.



That's where you come in.

By purchasing tickets to the 2025 Tour of Homes, held September 13th and 14th, you're supporting this ongoing work to protect and celebrate one of Asheville's most iconic neighborhoods. Come rain or shine, you'll enjoy a delightful weekend exploring our historic homes, taking in the mountain views, and connecting with our community and the rich legacy of the Grove Park – Sunset Mountain area.

We invite you to be part of this special tradition. Whether you're a longtime admirer of historic homes or just discovering the magic of this place, we promise an unforgettable experience.

 **For tickets and more information, visit:**

gp-smna.org/tour-of-homes and click button for Home Tour Info & Tickets



To the adventure,
Katie Richard
 photography

 828-713-4867
 ktrichardphoto@gmail.com
 WNC & beyond
 katie-richard-photography.com

north asheville living



Meet
Christine Page
& Dana Irwin!

POWERED BY



Cover Photo by Katie Richard Photography